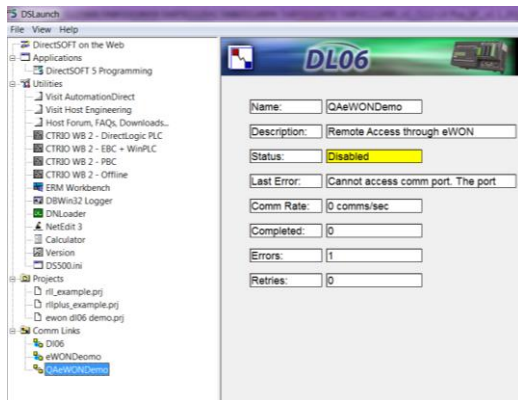


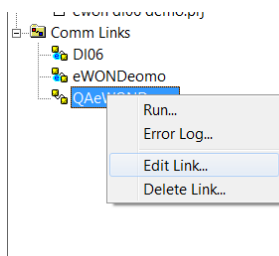
eWON QuickGuide: Increasing Time-Out settings of the PLC to accommodate Remote connectivity.

Description: The following guide shows how to increase the Timeout settings of the DirectSoft software so that software will be able to recognize PLCs that are remotely connected.

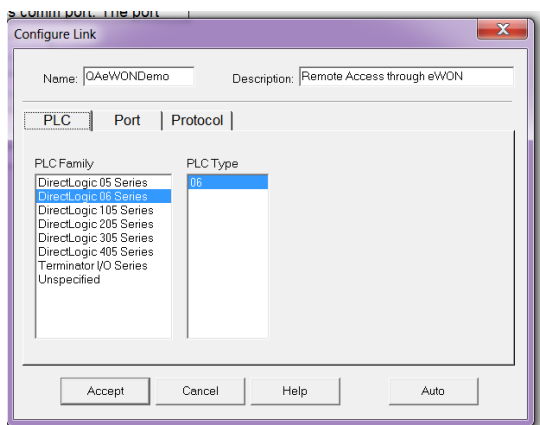
1. Open *DSLaunch* and highlight the *Comm Link* that is set to connect to the remote PLC.



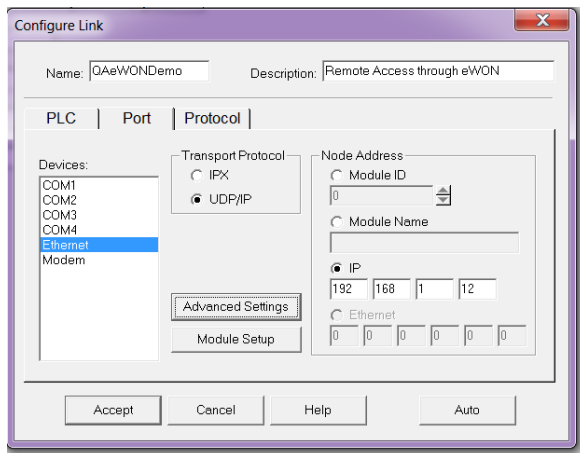
2. Right Click on the Link name and click *Edit Link*



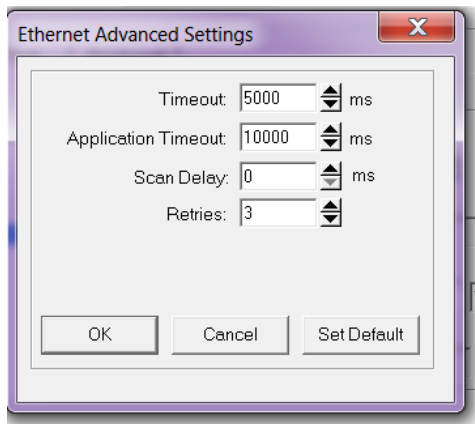
3. Highlight the PLC type under the PLC Tab.



4. Select the *Port* Tab. Highlight *Ethernet*
5. Select *UDP/IP* as the *Transport Protocol*
6. Set the *IP Address* of the PLC
7. Click *Advanced Setting*



8. Set the *Timeout* to about 5 Seconds
9. *Application Timeout* to 10 seconds.
10. Click *OK*



11. Click on the *Protocol* tab
12. Select *ECOM*
13. Set *Retries* to 3
14. Click *Accept*

